

Automated Collection Coming to Howick

In coordination with Circular Materials, the Township of Howick, and WM (Waste Management), automated waste and recycling collection is being introduced to the community.



Automated Collection with Wheeled Carts Service Begins Monday, August 3, 2026!

Carts set out for collection before this date will not be serviced, so please be sure to use your cart beginning on the correct start date.

To help keep recycling running smoothly, please rinse food residue and empty all liquids from recyclable containers before placing them in your cart. For a complete list of acceptable recycling materials and preparation guidelines, please refer to the brochure insert.

Thank you for your participation and cooperation during this transition. Proper waste management plays an important role in maintaining reliable service for the entire community.

Collection Schedule

Your collection schedule and service day will not change.

Cart Delivery

WM is delivering new waste and recycling carts to residents between July 13 and July 24, 2026. Residents are limited to one green cart for waste and one blue cart for recycling collection. Place new carts out for collection on the week of August 3.

Learn More:

circularmaterials.ca/howick



Curbside Cart Service



Waste Service

Use the cart with green lid for waste - Please bag your waste and tie the bags tightly before placing them inside your cart.



Recycling Service

The blue cart is exclusively for recycling - Please place recyclables directly into your cart. Make sure plastics and packaging, metal and aluminum, clear

and coloured glass and paper and fibre are empty and free from food residue. Please flatten cardboard and paperboard. A list of acceptable items are listed opposite page.

Important Cart Information

You are responsible for cart placement and retrieval. All carts will have a RFID code attached to each address. Carts remain WM property. Please do not take carts with you if you move.

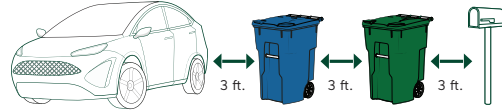
Cart Set Out



Have your carts at the curb the night before or **no later than 7:00 a.m.** on your collection day.

Helpful Tips for Automated Service

Place your carts at the end of your laneway at least three (3) feet apart and three (3) feet away from any obstacles. Place the wheels of the cart toward your house.



Do not obstruct the collection of the cart by parking vehicles in the vicinity or cul-de-sac. Keep the area clear for easy access by collection trucks.

Do not overfill the carts.

The lid must be securely closed. Trucks will not service additional items outside the cart.



Recyclables should be loose in the cart and not bagged.

Cardboard boxes MUST be broken down and placed in the recycle cart to be recovered.



Below are some of the accepted materials for curbside recycling:

Accepted



Paper



Cardboard and boxboard



Paper laminate packaging



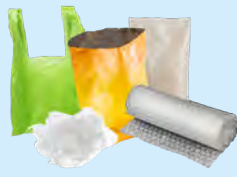
Foam packaging



Cartons



Plastic Containers



Flexible plastics



Glass containers



Metal

Questions?

Contact WM for questions about:

- Missed collection
- Cart Inquiries
- Other questions

☎ 1-800-561-1655

✉ canresidential@wm.com.

